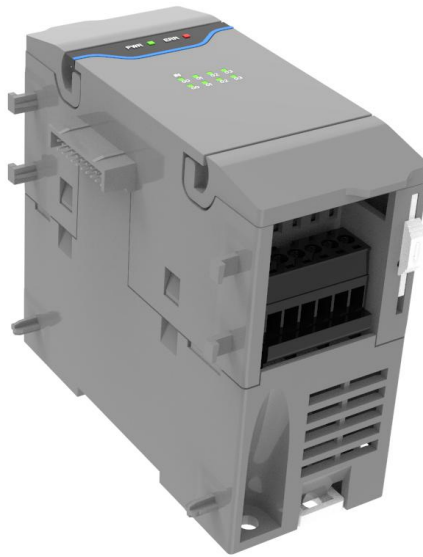


FL3 Series PLC Analog Expansion Module

FL3-2AD2DA



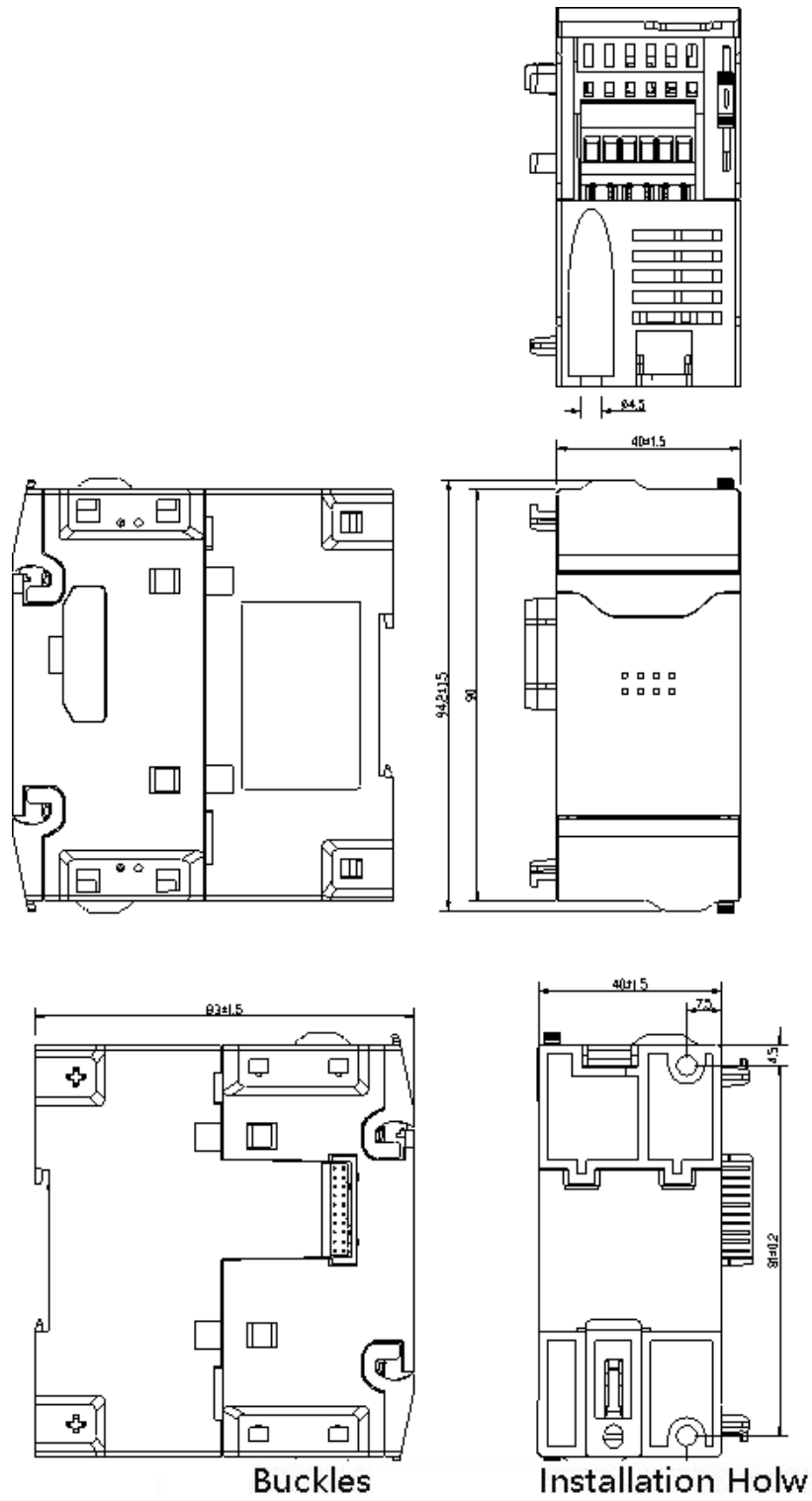
Products Overview

- FL3 serial main PLC analog expansion module in the right side.
- The main PLC supports at most 8 expansion module.
(digital/analog/temperature module)
- You can decide input/output signal type according to the wiring(voltage or current).
- Modules combination with flexible setting.
- Convenient wiring with removable wiring terminals.
- Slider/screw installation with easy and convenient installation.

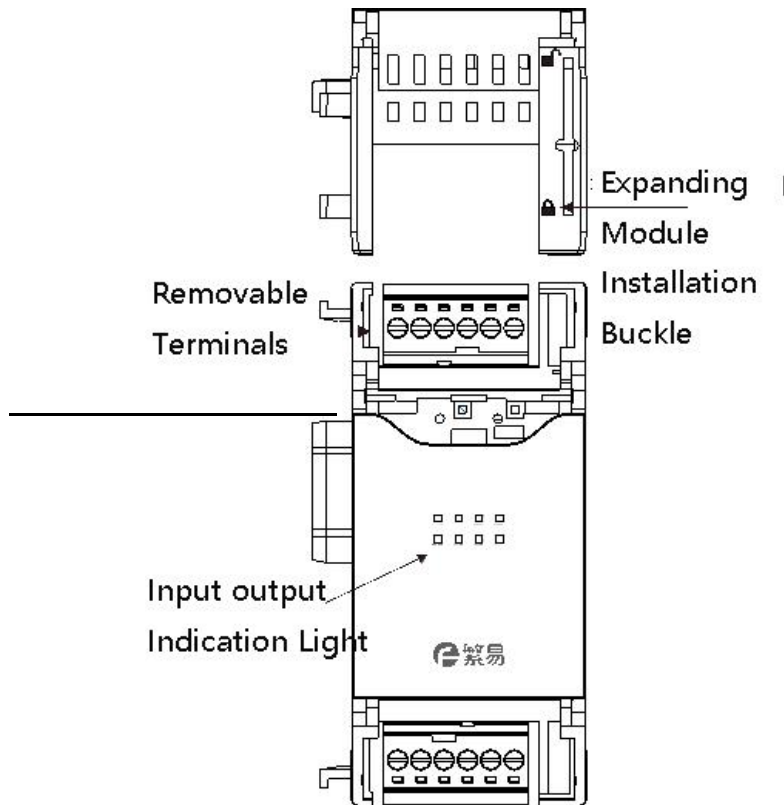
Specifications

Model	FL3-2AD2DA
Input Counts	2 counts
Output Counts	2 counts
Resolution	12Bit
Input/output Signal Range	Voltage: 0-10V, Electricity: 0-20mA
Input/output Value	Voltage: 0~10000, Electricity: 0~20000
Minimum Resolution	Voltage:1mV(10V/10000) , Electricity:1μA(20mA/20000)
Comprehensive precision	±1 %
Maximum Signal Permit	Voltage:15V Electricity: 30mA
Input Impedance	250KΩ(Voltage),249Ω(Electricity)
Output Loading Range Permit	Voltage Output: 2K~1MΩ Current Output: 0~500Ω
Input Occupation Address	2 Registers AIn~AIn+1 (n=0~254)
Output Occupation Address	2 Registers AQn~AQn+1 (n=0~254)
Input Power	24VDC -15%/+20% , 3.2W max. Main PLC offers power without external wiring
Wiring Institute	Removable Terminal Strips
Working Method	It cannot work separately, and it needs equip FL3 series PLC for using.
Working Temperature	-20~70°C
Storage Temperature	-30~80°C
Environment Humidity	10~90%RH(without condensate in the surface)
Mechanical Structure	Engineering Plastics
Installation Method	You can install it on DIN46277(35mm width) slider or fix it by screws.
Dimension	40mmx90mmx83mm
Weight	15g

Size



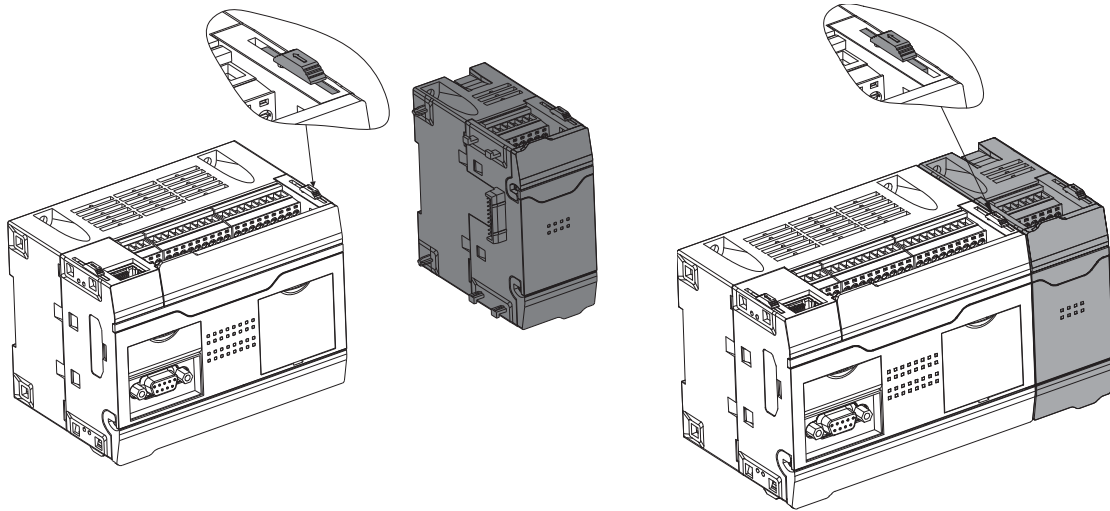
Products Structure



Name	Function	
Installation Buckles	Used to fix this module and right module.	
Expanding Pins	Used to connect left module.	
Input Signal/Output Terminal Strips	Used to connect external analog input/output terminal strips, removable	
Module Model	The module model of this function	
Module Status Light	Running PWR	The light will be on when the module is with power supply.
	ERR	ERR light off. The module is in working normally. ERR light blinks, the module is authorized and needs to be returned to the factory to treat. ERR light ON, this module is with serious application faults. You need initialize the program of the PLC or update firmware, if the problem is still unsolved, you need return to the factory for maintenance.

Installation of the Expanding Module

- (1) Please unlock the PLC right lock as indicated in the photo.
- (2) After pushing the expanding unit to the main PLC body connection, push the lock reversely to lock expansion module.
- (3) Add expanding unit after expanding module, and you can do same operation.



Terminals Definition

CH0IN			CH0 IN		
V+	I+	VI-	V+	I+	VI-
FL3-2AD2DA					
V+	I+	VI-	V+	I+	VI-
CH0 OUT			CH1 OUT		

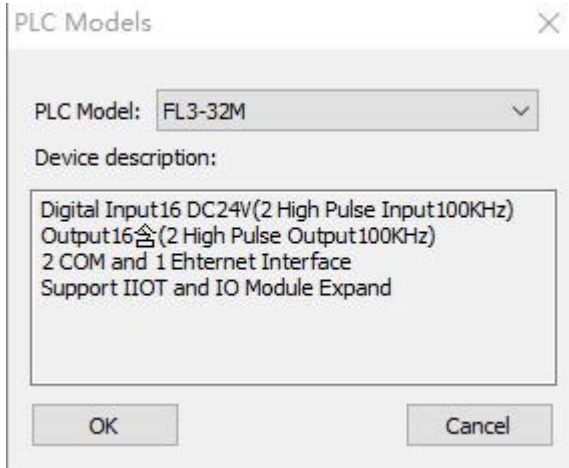
Wiring Terminals Function:

CH0,CH1 IN	Analog input channel 1, channel 2
CH0,CH1 OUT	Analog output channel 1, channel 2
V+	Each channel voltage+
I+	Each channel electricity+
VI-	Each channel voltage/current public port-

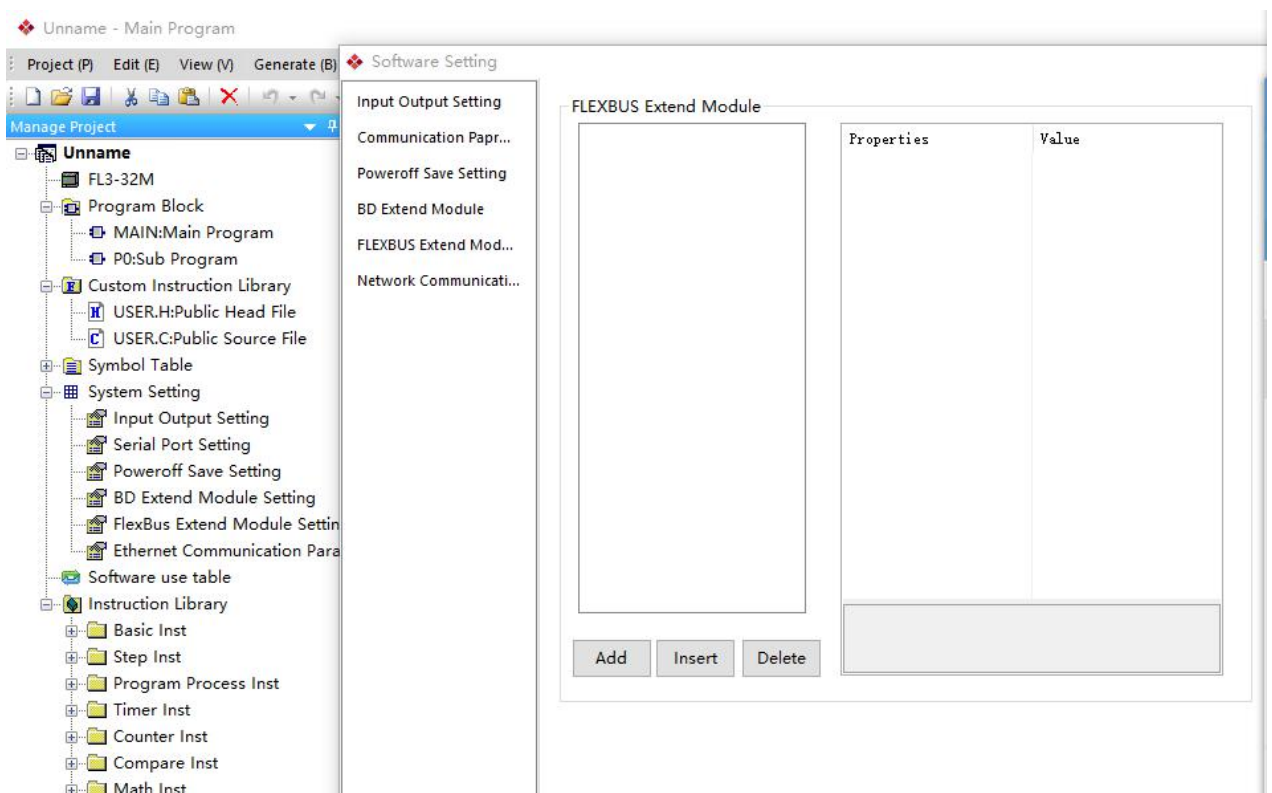
Software Preparation

You need do correspondent setting in PLC programming software Flexlogic when using module, then you can use it normally. Now we list module FL3-2AD2DA as example to illustrate how to set in the edition software as following step:

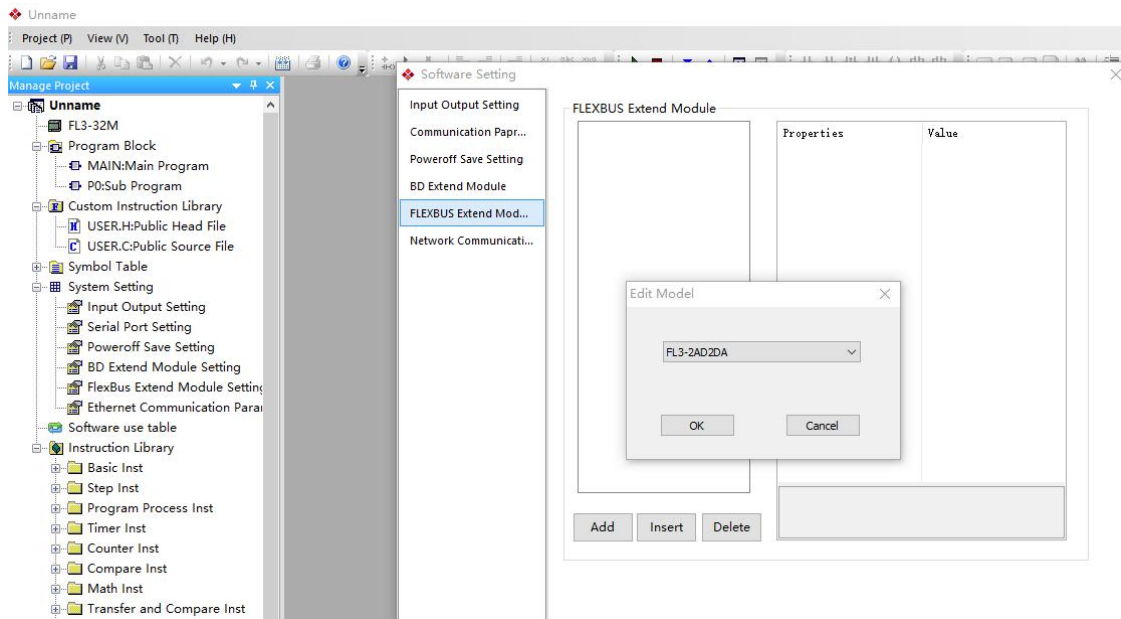
1. Open FlexLogic software to select FL3 main PLC(FL3-32M)



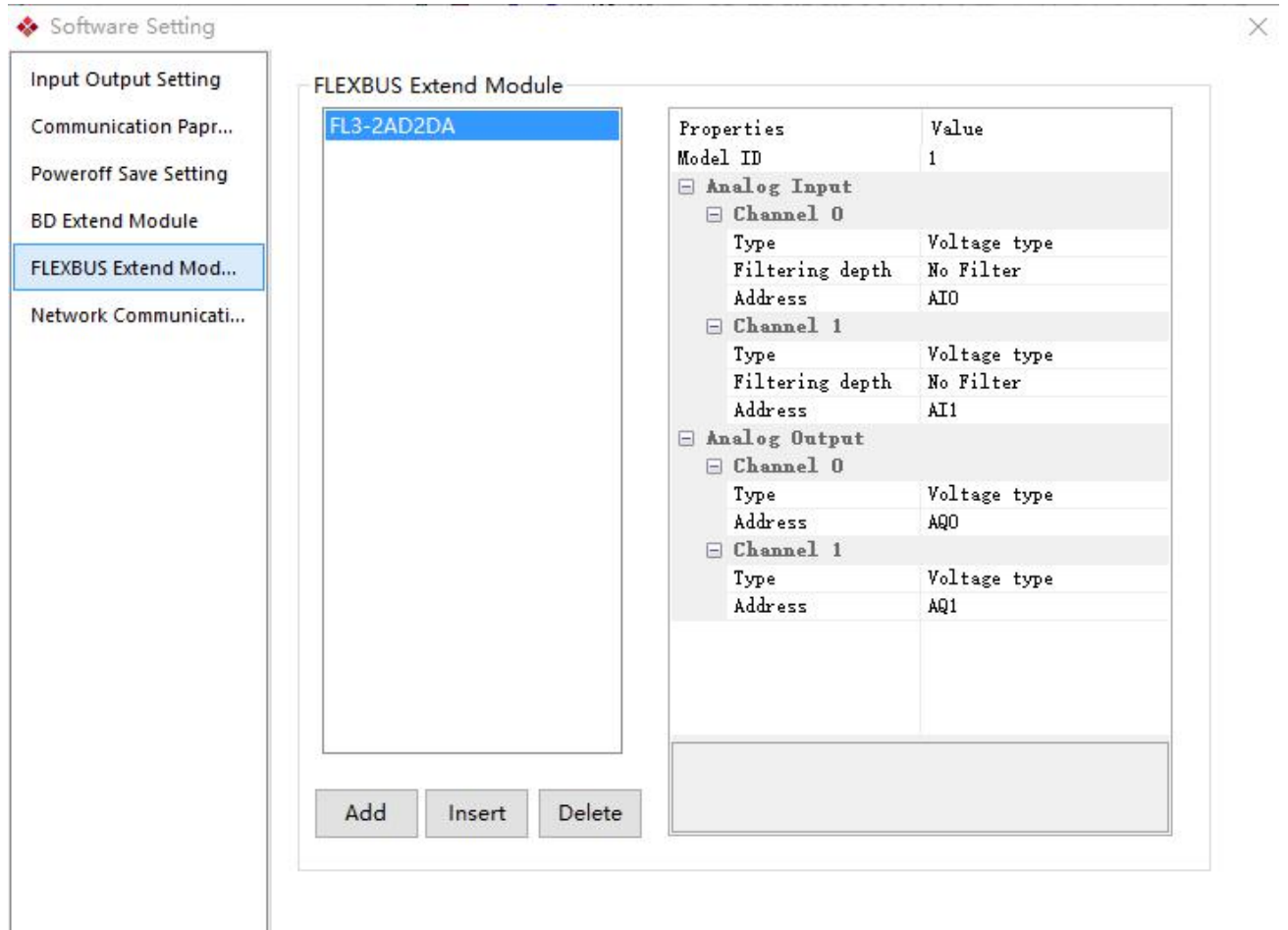
2. Please click software left side-Manage Project List-FlexBus Extend Module setting, the popping window is as below:



3. Select FlexBus expanding module, click to add the module, and select the using module as FL3-2AD2DA, after clicking “ok”.



4. After adding FL3-2AD2DA analog module, the popping setting page can set for each analog input/output channel signal type(voltage, electricity).



Contact us

Shanghai (R&D Center)

Address: Floor 11, INNO center,
No 298 Guoxia road,
Yangpu district,
Shanghai, 200043

Telephone: +86-21-68683993

Fax: +86-21-65107569

Suzhou

Address: Room 915, Ricky Building,
No.668, Yuting Avenue, Suzhou
Industrial Park

Telephone: +86-512-69833996

Shenzhen (Factory)

Address: 5th Floor, NO.2 Building,
Lanyun Science Park,
Tangtou Road, Shiyan Town,
Baoan District, Shenzhen,
China

Telephone: +86-755-27610682

Fax: +86-755-27629895

Wuxi

Address: Room 1603, Taihu
Mingzhu Development
Building, No. 1890
Taihu West Road, Binhu
District, Wuxi City

Telephone: +86-18505101982

Beijing

Address: Room 2008, Building 1, No.
93 Jianguo Road, Chaoyang
District, Beijing (Wanda
Plaza)

Telephone: +86-10-58204608

Fax: +86-10-58204608

Hangzhou

Address: Room 1005, Building 6,
Dongsha Mingcheng,
No. 159, Tiancheng
East Road, Xiasha
Development Zone,
Hangzhou